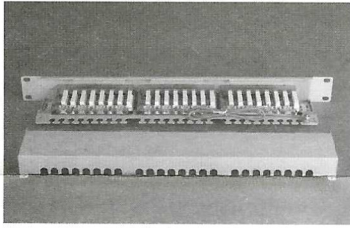


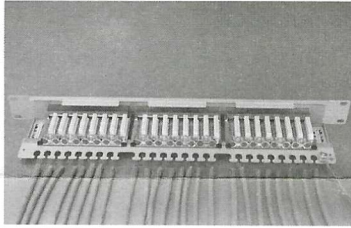
INSTRUCTION SHEET

1



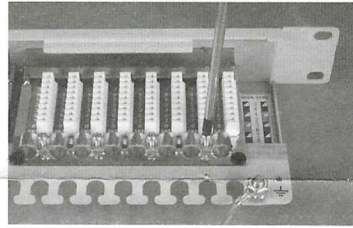
Remove the rear cover from the patch panel and place the panel on a sturdy surface.

2



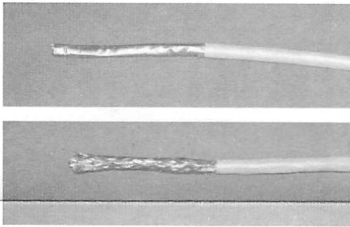
Align the cables with their respective IDC connecting blocks in order of termination. Provide extra cable length for termination—at least 5-10 cm (2-4 inches).

3



Loosen or remove the screw holding the ground clip so that the cable can be inserted through the ground clip.

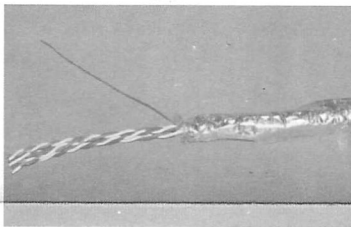
4



Strip approximately 7.7 cm (3 in.) of the jacket from the cable. Be sure that the foil and/or braid remains intact.

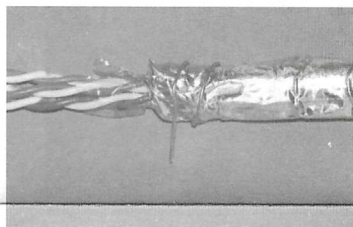
- If the cable has no braid see steps 5-7
- If the cable has a braid see steps 8-11

5



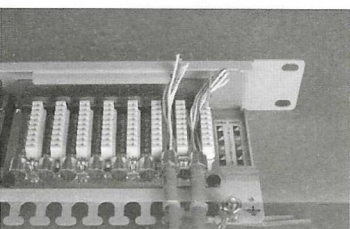
For cable with foil but no braid: Fold the foil shield back over the jacket of the cable.

6



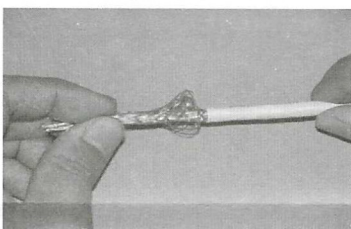
For cable with foil but no braid: Wrap the drain wire around the foil shield. Do not wrap the drain wire more than 1.3 cm (0.5 in.) from the fold in the foil shield. (See instruction 12 for alternative drain wire instruction).

7



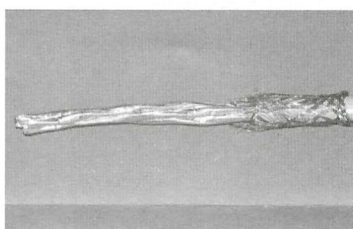
For cable with foil but no braid: Insert the cable through the ground clip as shown.

8

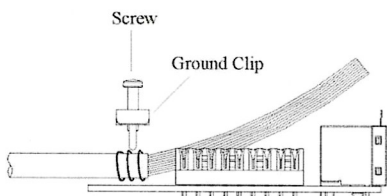


For braided cables: Push the braid back over the jacket of the cable.

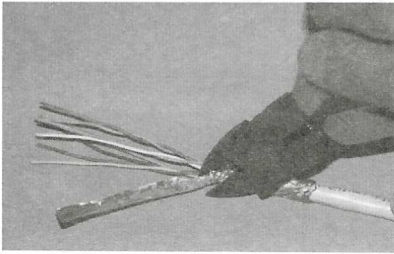
9



For braided cables: Slide the braid back over the cable jacket and—if there is a drain wire—wrap it around the braid close to the fold at least 3 times (See instruction 12 for alternative drain wire instruction).

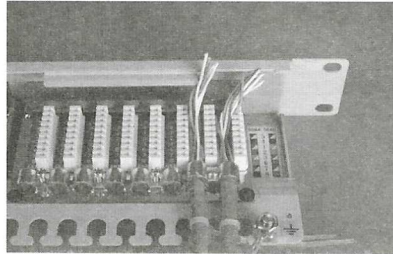


10

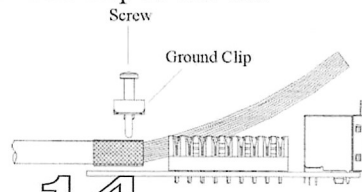


For braided cables:
Unwrap the foil that extends beyond the jacket from each pair and cut it off.

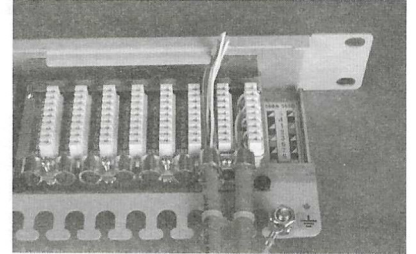
11



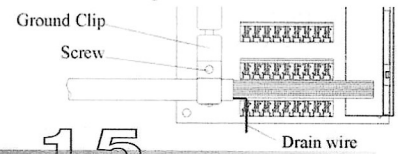
For braided cables:
Insert the cable through the ground clip as shown.



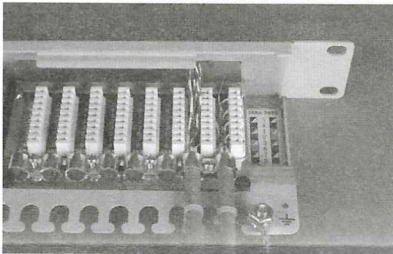
12



Instead of wrapping the drain wire around the foil shield, the drain wire may be inserted into the ninth slot (the slot with no color code) on the IDC connecting block as shown.

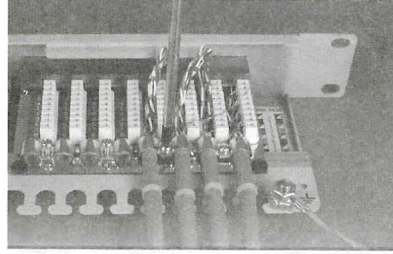


13



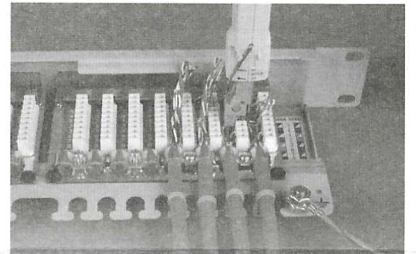
Fasten the cable to the strain relief tabs with cable ties and trim off the excess cable tie.

14



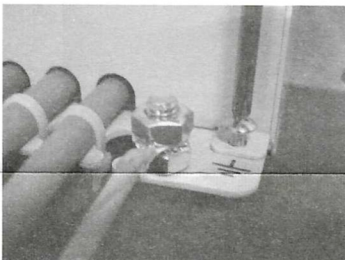
Tighten the ground clip screw until it reaches the bottom. Ensure that there is no foil in contact with the ground clip.

15



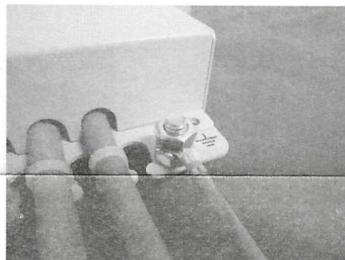
Place the wires into the IDC connecting blocks according to the color code on the blocks. Punch the wires down with an impact tool in order to terminate them. Do not forget to terminate the drain wire if it has been inserted into the ninth slot.

16



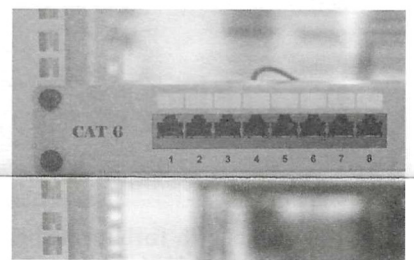
Slide the rear cover into place and lock it into position by fastening the screws.

17



Attach a ground wire from the ground lug to a grounding device.

18



Mount the patch panel in the desired position on a relay rack.