

Outdoor Fiber-optic Switch board - 15J

DESCRIPTION:

Outdoor cabinet designed for FTTh networks where a simple construction allows for any arrangement of optical fibers. - Body made of sheet metal with Magnelis coating 1mm thick,

- The pedestal made of sheet metal with a Magnelis coating 1.5mm thick, designed for mounting by digging into the ground to a depth of 60cm,

- Protection IP65 and mechanical resistance IK10 ratings (confirmed by test report No. B / 2016/55)

- In the upper part of the cabinet there is a separate space for supplying the source cable, together with the field for the 2J signal source and the tray of welds,

- The upper part of the door has space for optical splitter and plastic holders for storage,

- Commutation field with a capacity of 15J (15 holes for SC Sx adapters)

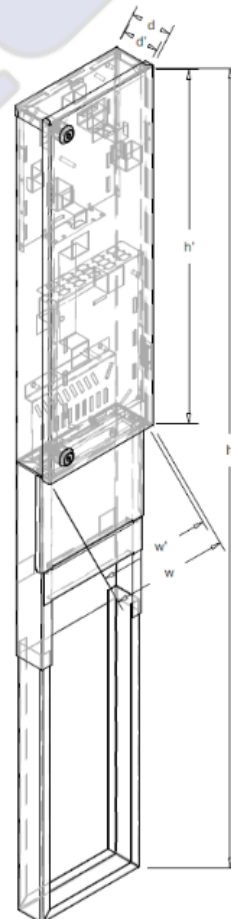
- On the bottom part of the door, a dedicated 12J splice tray is located,

- Separate storage space for client cables at the bottom of the cabinet,

- Door closed with 2 airtight cylinder locks (dedicated key code),

- Poured polyurethane gasket on the door,

- The ground part of the cabinet after mounting the pedestal is 65cm.



External dimensions (mm)			Internal dimensions (mm)		
height (h)	width (w)	depth (d)	height (h')	width (w')	depth (d')
1249	186	65	543	167	57



CoreTel s.r.o.
K Cintorínu 64
010 04 Žilina
Slovenská republika

IČO: 47 744 731
IČ DPH: SK2024077726

Fio banka a.s. č.ú.:
EUR: 2500577171/8330
CZK: 2100577172/2010
USD: 2400577174/8330

Tel. č.: +421 948 87 55 87
Tel. č.: +421 948 86 55 86
Email: coretel@coretel.eu
Web: www.coretel.eu